



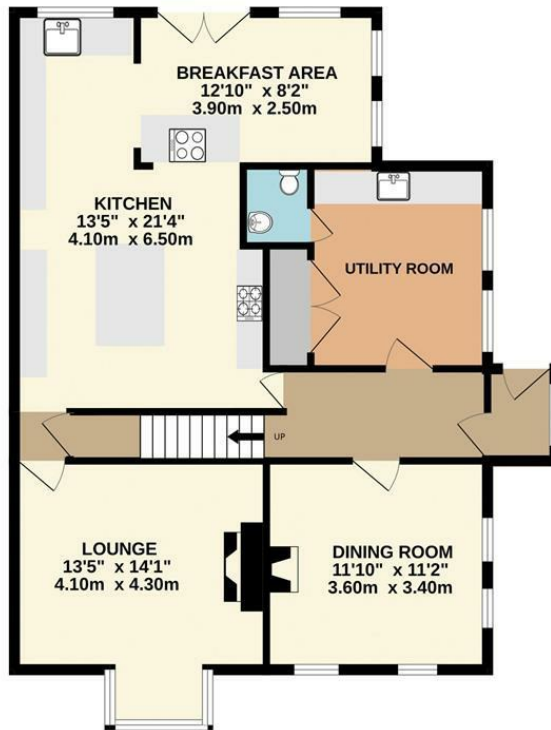
3 Bed
House - Semi-
Detached
located in Hemsworth

Asking Price £450,000



enfields

GROUND FLOOR
859 sq.ft. (79.8 sq.m.) approx.

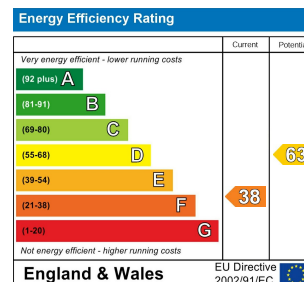


1ST FLOOR
681 sq.ft. (63.3 sq.m.) approx.



TOTAL FLOOR AREA : 1540 sq.ft. (143.1 sq.m.) approx.

Whilst every attempt has been made to ensure the accuracy of the floorplan contained here, measurements of doors, windows, rooms and any other items are approximate and no responsibility is taken for any error, omission or mis-statement. This plan is for illustrative purposes only and should be used as such by any prospective purchaser. The services, systems and appliances shown have not been tested and no guarantee as to their operability or efficiency can be given.
Made with Metropix ©2025



DIRECTIONS

CONTACT

30 Newgate
Pontefract
WF8 1DB

E: sales-pontefract@enfields.co.uk
T: 01977 233124

enfields